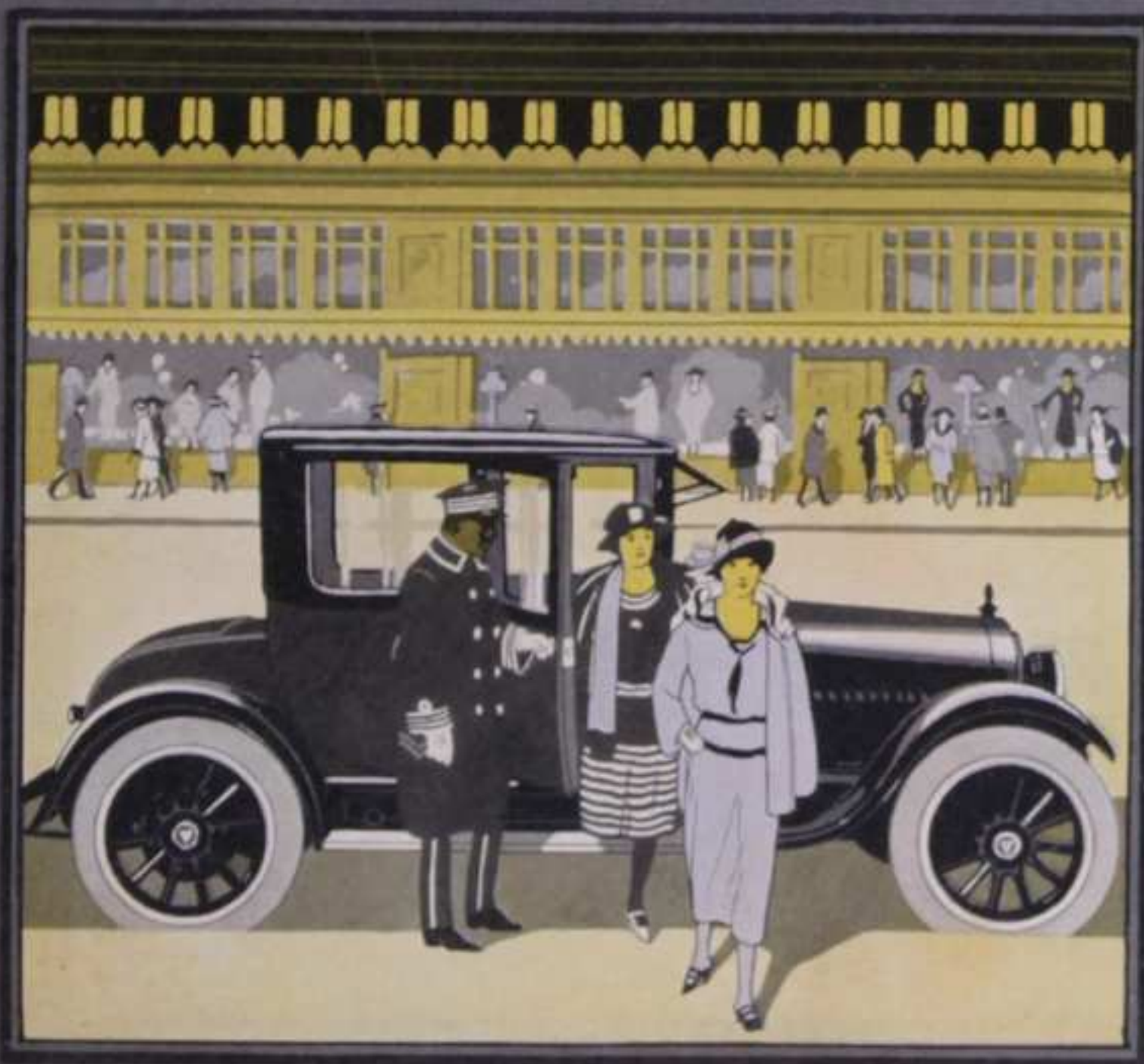


THE HUDSON SUPER-SIX COUPE



used in place of catalog 1927

The Hudson Coupe Offers a Distinctive Closed Body Type to the Fine Car Owner Who Wants Detail of Refinement



The Super-Six Coupe is an exceptionally roomy and comfortable four-passenger car

THERE IS AMPLE ROOM for two on the wide and spacious rear seat, with deep, restful cushions. The driver's seat is separate. To its right is a strong comfortable folding seat facing forward for the fourth occupant. The upholstery is a rich fabric in accord with the other appointments of this beautiful Hudson closed model. Its distinctive style and luxuriousness makes a special appeal to the lady motorist.

Hudson closed cars have always been noted for their splendid appearance. No freakish body fad, attractive only for the moment, has ever been offered. The lines of the first Super-Six of six years ago are attractive and in good taste today. These are your assurances that today's Coupe will meet every requirement of refinement, not only next year but for years to come.

And the permanence of the organization producing Hudson cars is most important. Since 1909 the factory management has remained the same. The personnel of Hudson distributors throughout the world reflects the car's very high standing—98 3/4 percent of the output being handled by establishments associated with Hudson for more than eight years. That is a remarkable record.

This degree of permanence, both of product and organization, is especially worthy of consideration by every prospective car owner.

Wherever you may travel in the United States, Hudson service will be near. And it will be that type of service which has learned from long experience the best methods of keeping Hudsons at their best.



With the auxiliary seat folded forward the large rear seat is easily accessible

THE COUPE BODY represents the maximum effort of skilled closed body builders in producing a beautiful luxurious model that will please the most critical.

Selected wood thoroughly seasoned and fitted with precision is used in the strong frame-work. Metal panels are aluminum, light, yet strong, highly polished to give that smooth finish. Doors remain in perfect alignment, hung on strong pillar posts with four-hinge supports. Most efficient door latches and dove-tail jambs prevent rattles. Modern type regulators for raising and lowering windows and the dash controlled cowl ventilator assure comfort for summer driving.

The interior is finished in fine quality of cloth which harmonizes in color with exterior.

The interior package compartment and roomy rear deck amply provide for parcels and luggage.

Standard equipment includes radiator shutters, motometer, transmission lock (approved), cord tires and interior accessories.

And this splendid body is protected from road shocks by being mounted on the rigid Super-Six frame. Long life is thus made certain.

Body panels and wheels are finished in a dark blue. The balance of chassis parts are in black.



THE PERFORMANCE of the Hudson Coupe will impress you, perhaps, even more than its beauty and refinement.

You will immediately appreciate the immense reserve power of the Super-Six motor. Its ability to accelerate quickly and smoothly will give you a new joy in motoring.

You will be surprised how the Coupe climbs hills and runs through sand without a sign of difficulty—you will thoroughly enjoy throughout a long day's continuous travel the satisfaction which comes from uniformity of performance—that 100 percent performance which the Super-Six will give you at all times, under all conditions year after year.

And, too, you will find the Hudson Coupe is easy to drive. The details of the control mechanism have been so designed as to provide for operation with the least possible effort. Women particularly appreciate this feature.

This smooth, and apparently effortless performance of the Super-Six is the result of coordinating every unit in its construction so that all function uniformly under all conditions.

Squarely behind the Coupe is the foundation of Hudson's years of world-known engineering and acknowledged manufacturing leadership.



Hagley

MUSEUM
AND
LIBRARY

GIFT OF

Z. Taylor Vinson