

•
**THIRD, FOURTH
AND
FIFTH FLOORS
AT
TWELVE
SOUTH TWELFTH**
•

It is Springtime the year 'round at TWELVE SOUTH TWELFTH—for The Philadelphia Saving Fund Building is *air conditioned* throughout, and is the first public office building on the Atlantic Seaboard to provide *Manufactured Weather* for all tenants at *all times*.

Air conditioning means quiet and comfort and increased health. It marks the end of dust and noise from the city streets. Winter or summer, you will never find it necessary to raise a window at TWELVE SOUTH TWELFTH!

Natural daylight is a logical companion to regulated humidity, for both mean increased efficiency. More than 3,000 separate window units at TWELVE SOUTH TWELFTH give you daylight in almost natural abundance. The Philadelphia Saving Fund Building was *designed* to be day lighted!

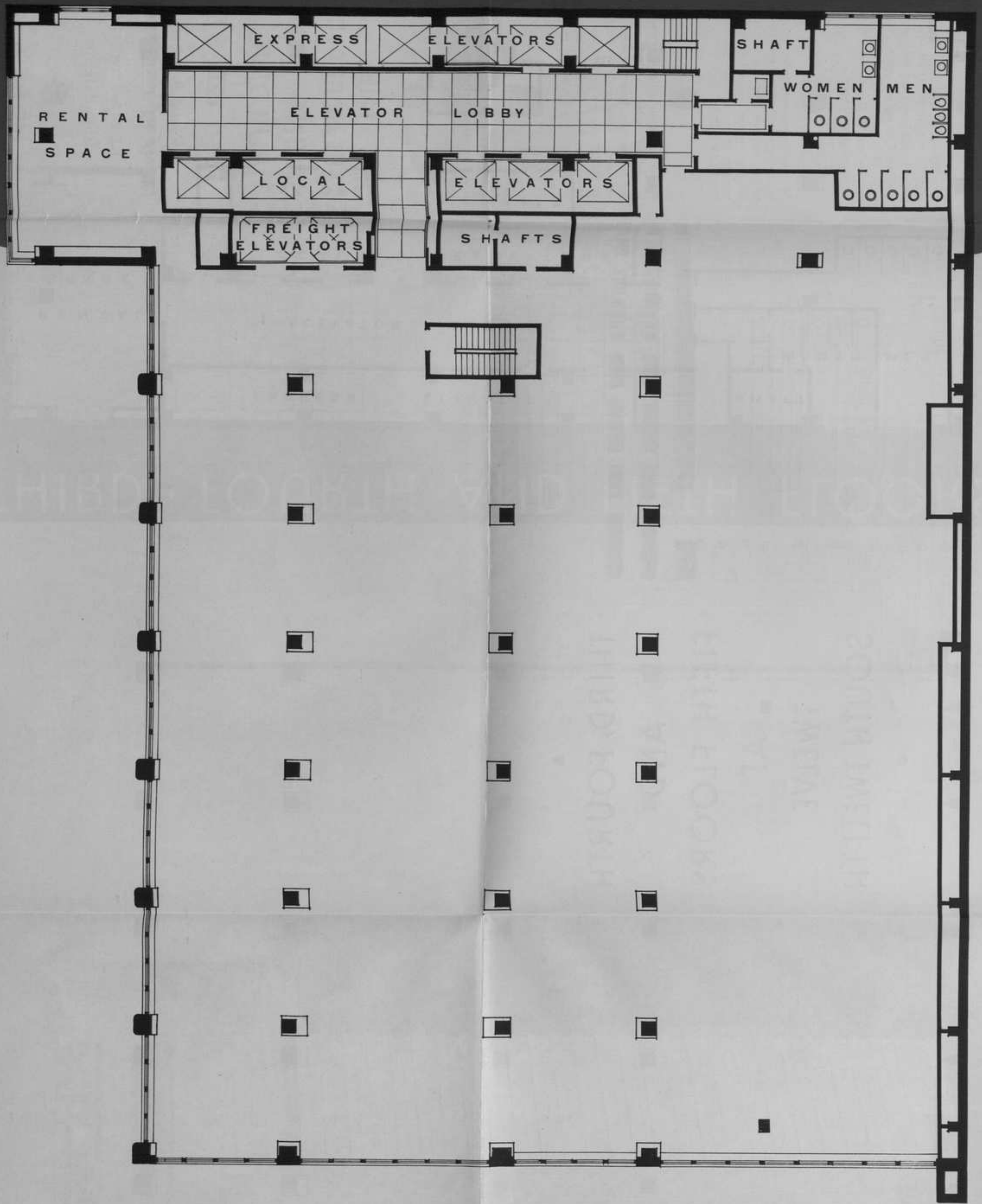
You will want to be a tenant at TWELVE SOUTH TWELFTH. *Nothing more modern* is available today. You will find this ultra-modern office building a *profitable location*.

THE
PHILADELPHIA
SAVING FUND
BUILDING
12 SO. 12TH ST.

Rental Agent
RICHARD J. SELTZER
Lewis Tower
Philadelphia

Pennypacker 7532





SCALE 1/8" = 1 FOOT

THIRD • FOURTH AND FIFTH FLOORS

FRANKLIN FURNING CO. PHILADELPHIA