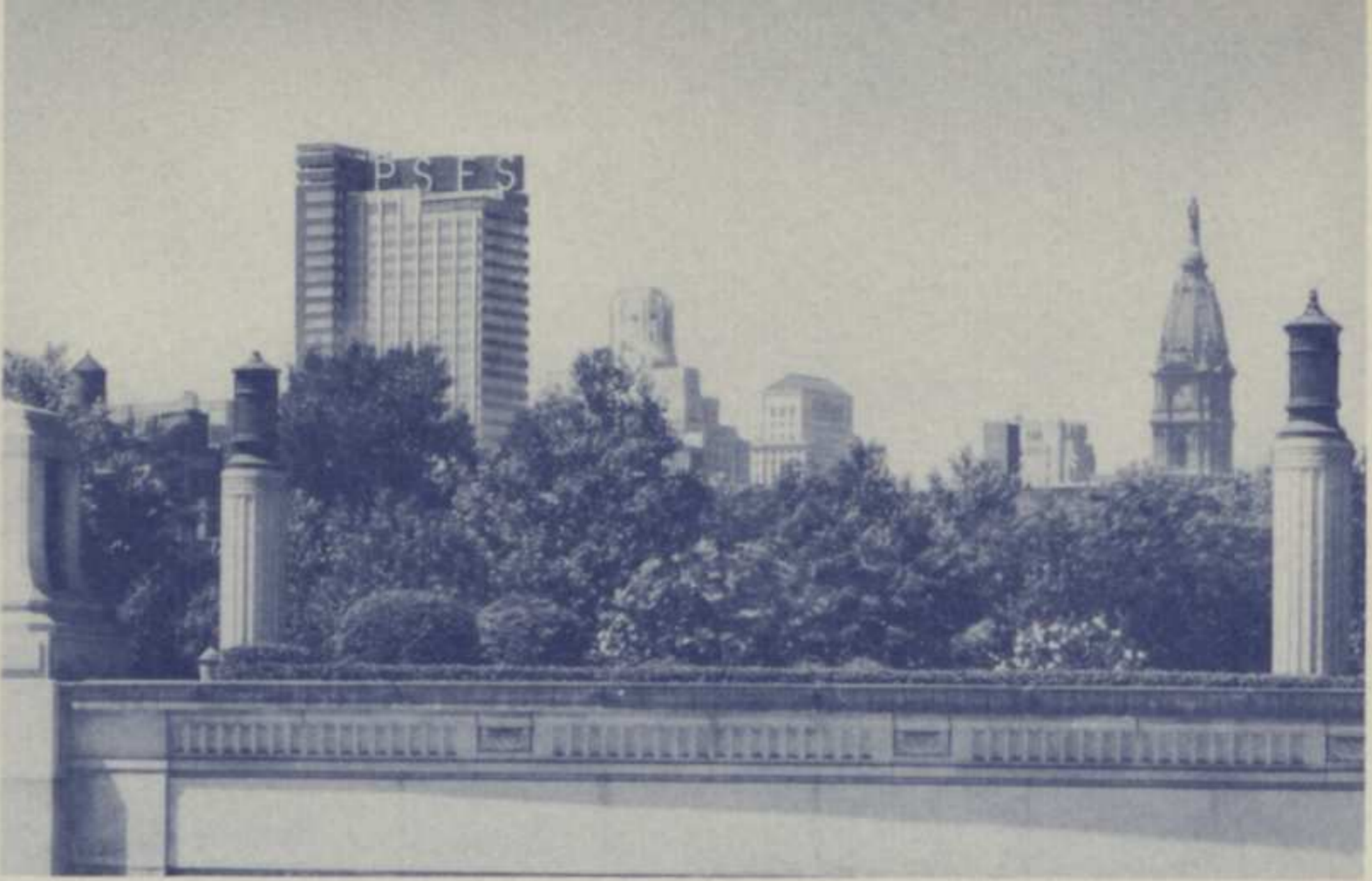




A distinguished Philadelphia business address • 12 South 12th Street

THE PHILADELPHIA SAVING FUND BUILDING



Two buildings above all others dominate the Philadelphia skyline. Or, more accurately, one building and a statue. The latter is of William Penn and stands atop City Hall tower, at the center of downtown. The building, two blocks east, is the Philadelphia Saving Fund Building. Its 36 stories flow upward 491 feet.

This building is known to businessmen throughout the United States and to architects throughout the world. It anticipated the current downtown "Philadelphia Renaissance" by 25 years. Designed by Howe and Lescaze, it is a distinguished example of the international style, most recently exemplified by the UN Secretariat Building and New York's Seagram Building. Some 65% of its wall space is windows; as this suggests, it is a *functional* building for the efficient and comfortable conduct of business.

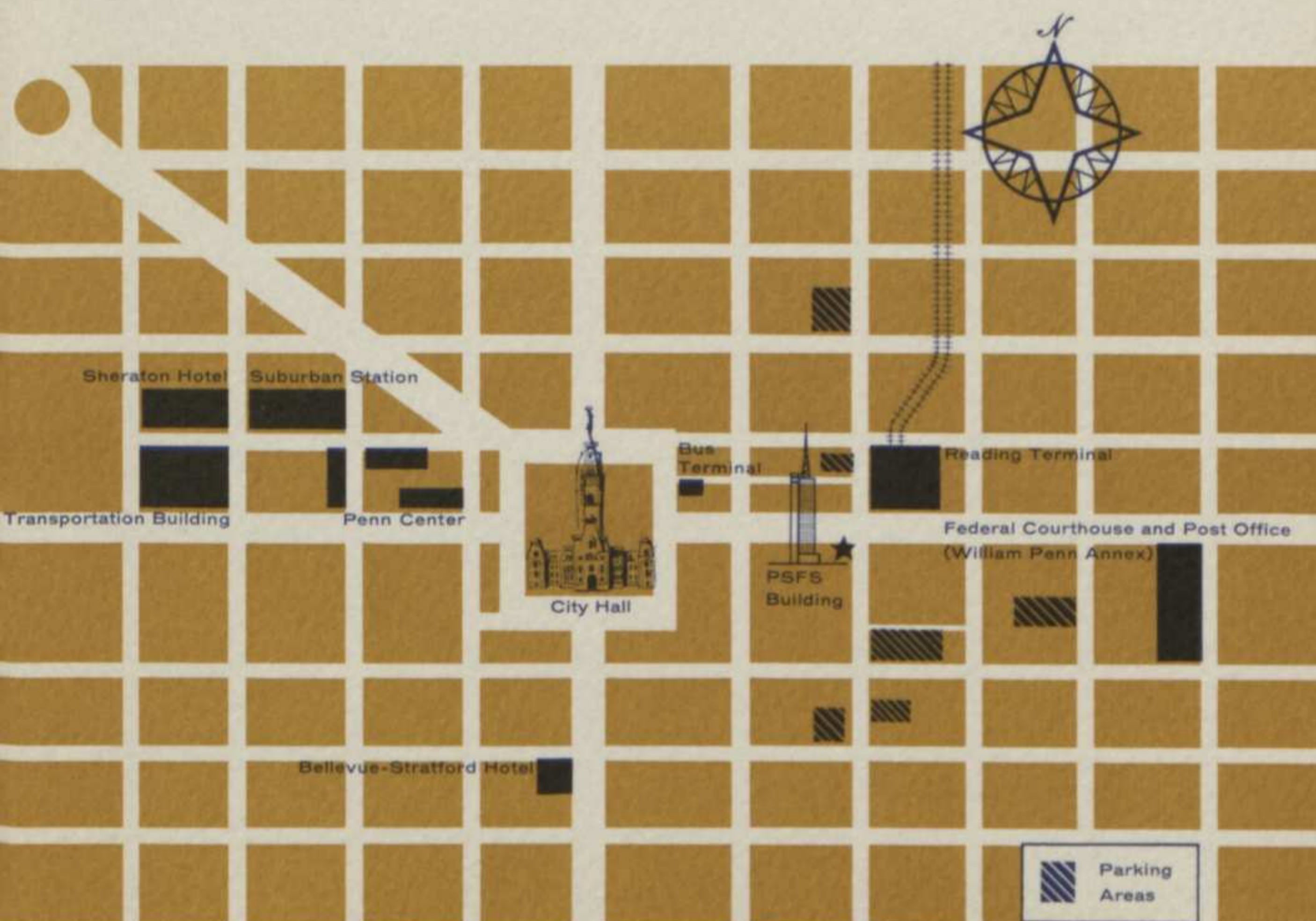
The Philadelphia Saving Fund Building houses the branches of important national concerns, as well as the principal offices of well-known local business and professional firms. On any letterhead "The Philadelphia Saving Fund Building" is an address of distinction.

## A CENTRAL LOCATION IN DELAWARE VALLEY

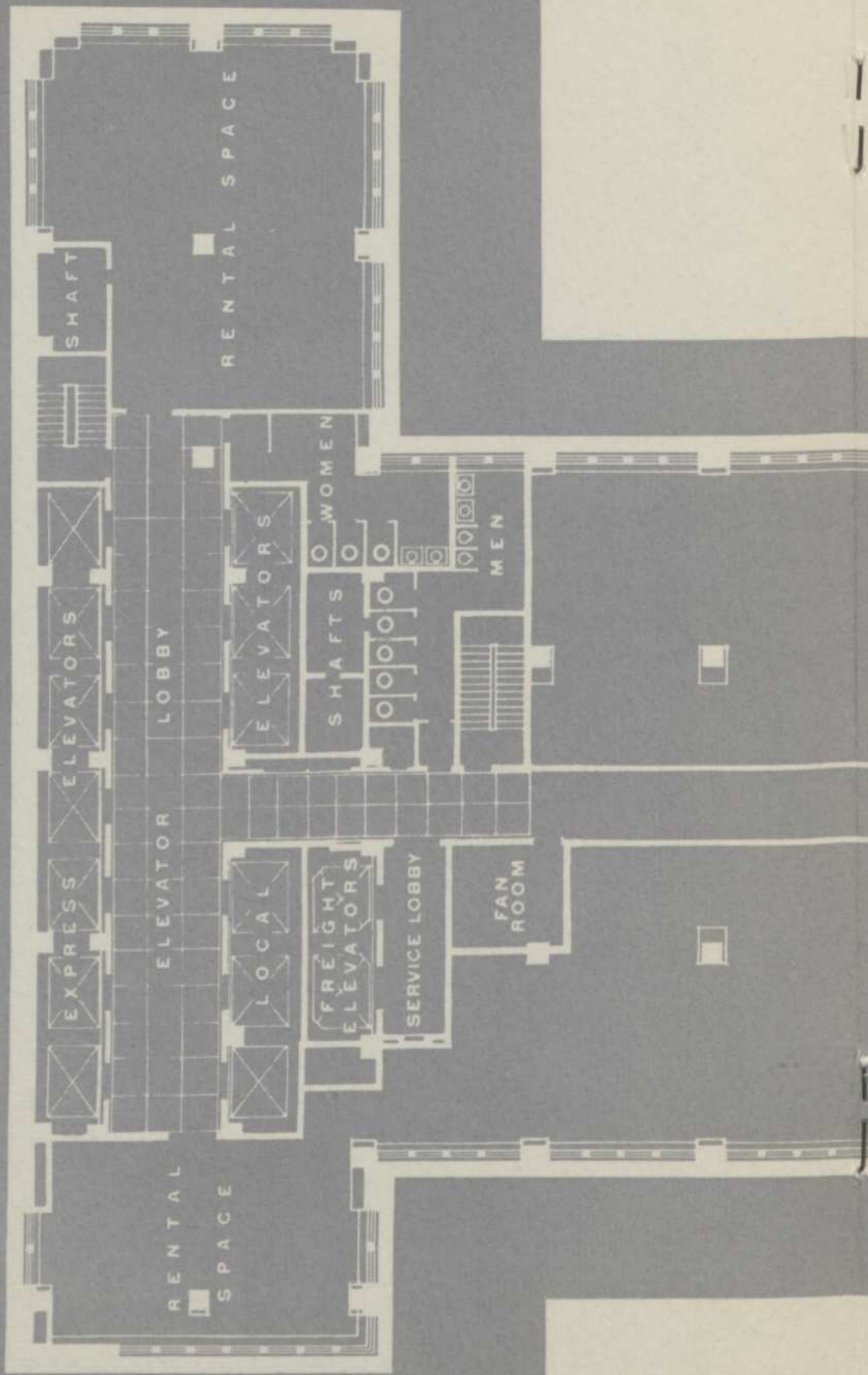
This building is centrally located in the business complex of downtown Philadelphia, the heart of Delaware Valley. Here you are two blocks from City Hall, three from the Pennsylvania Railroad's Suburban Station, and right across Market Street from Reading Terminal. The city's two subway lines cross two blocks away; surface transportation centers in the same area. There is a direct entrance from the building to the underground concourse system interlacing downtown Philadelphia—a convenience you'll appreciate in bad weather.

Philadelphia's leading hotels are within a 10-minute walk. Principal stores, restaurants and office buildings are equally near at hand. The Federal Courthouse and the largest downtown Post Office Branch are three blocks east.

Parking is no problem. Within one block are 1400 garage and outdoor parking spaces, with thousands more clustered close by. There is quick access to the new Schuylkill Expressway and thus to the Pennsylvania and New Jersey Turnpikes and all commercial and industrial areas in Delaware Valley.

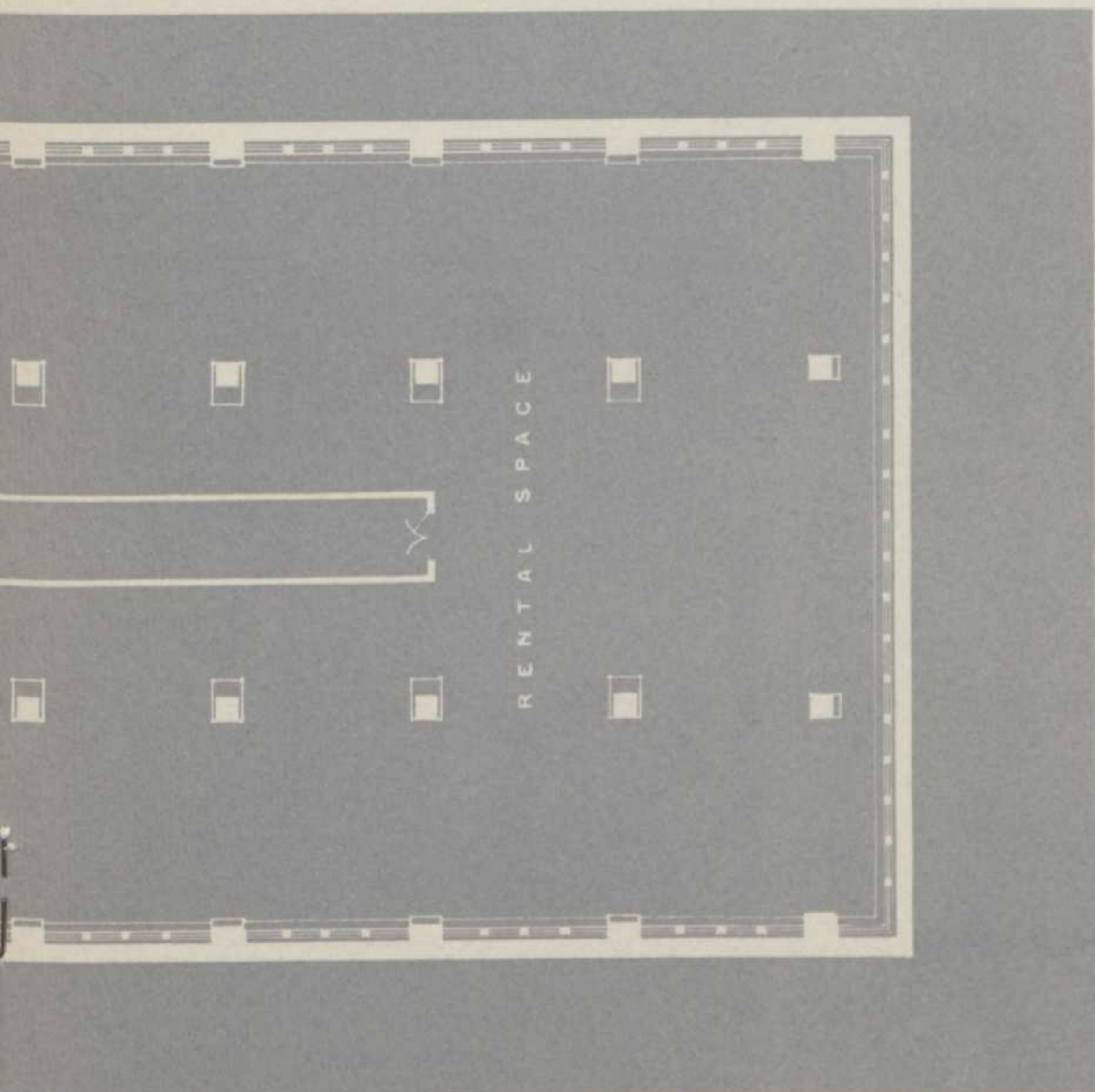


Typical floor plan. Scale: 1 inch equals 18 feet.



## EFFICIENT SPACE— SMALL OR LARGE

Whether your office requires a small, medium or large area, you can count on efficient space units in the Philadelphia Saving Fund Building. Its fundamental design—placement of columns, windows and plumbing and heating components—is such that most tenants require 15 to 20% less floor space than they would in an ordinary building.



You can use space with great versatility here, too. Flexible partitioning makes each floor equally adaptable to large open areas or closely partitioned offices. Erecting wall units is a matter of a few hours.

With its T-square layout and predominance of windows, the building has been designed for maximum sunlight. The latest fluorescent lighting throughout is the finest available substitute on dull days and winter afternoons. Acoustical tile ceilings, tile floor covering, and venetian blinds are standard equipment.

The experienced building staff, which includes a registered architect, can be of great assistance in the planning or redesigning of space to suit individual requirements.

## AIR CONDITIONING— ASSURED YEAR-ROUND COMFORT

The atmospheric controls in the Philadelphia Saving Fund Building operate the year round. When the outside thermometer climbs, complete, centrally installed Carrier air-conditioning equipment constantly, noiselessly absorbs excess humidity, pumps comfort into every office. Years of experience in operating the system assure you an ideal climate—and a measurable increase in the efficiency of office personnel.

## FULL BUILDING SERVICES— OWNER MANAGEMENT

The building is owned and managed by The Philadelphia Saving Fund Society, oldest mutual savings bank in the United States—a billion-dollar institution.

Two banks of elevators provide fast service; in addition, there are two independent high-speed freight elevators. A trained operating staff of full-time employees insures the highest standard of building maintenance and services. This has always been the keynote of management policy.

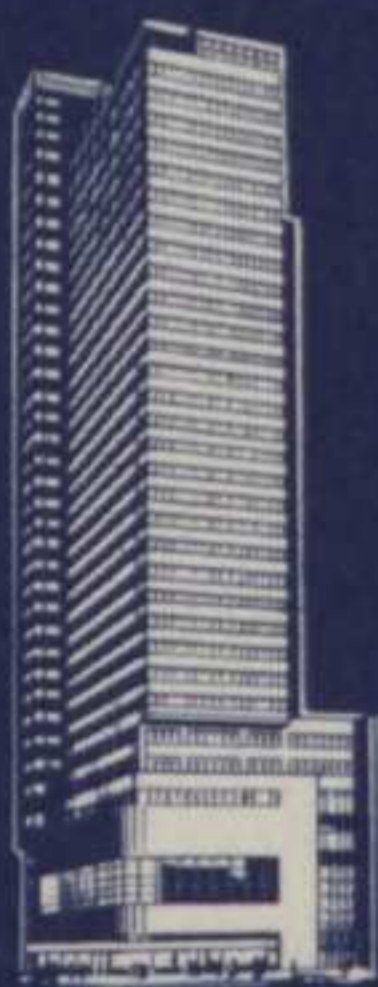
*For additional information,  
including future availabilities, address*

THE REAL ESTATE OFFICER

THE  
PHILADELPHIA  
SAVING  
FUND  
SOCIETY

12 South 12th Street  
Philadelphia 7, Pa.

*And, of course, you are invited  
to inspect the building any time,  
at your convenience*



# PSFS

THE PHILADELPHIA SAVING FUND BUILDING  
12 South 12th Street, Philadelphia 7, Pa.