



# Coldwell Lawn Mowers



# INTRODUCTION

The first lawn mower ever constructed in this country was built by Mr. Thomas Coldwell, the founder of the Coldwell Lawn Mower Company of Newburgh, New York. This catalogue is respectfully offered to the public as best typifying the progress and improvement that nearly half a century of continued prosperity has accomplished.

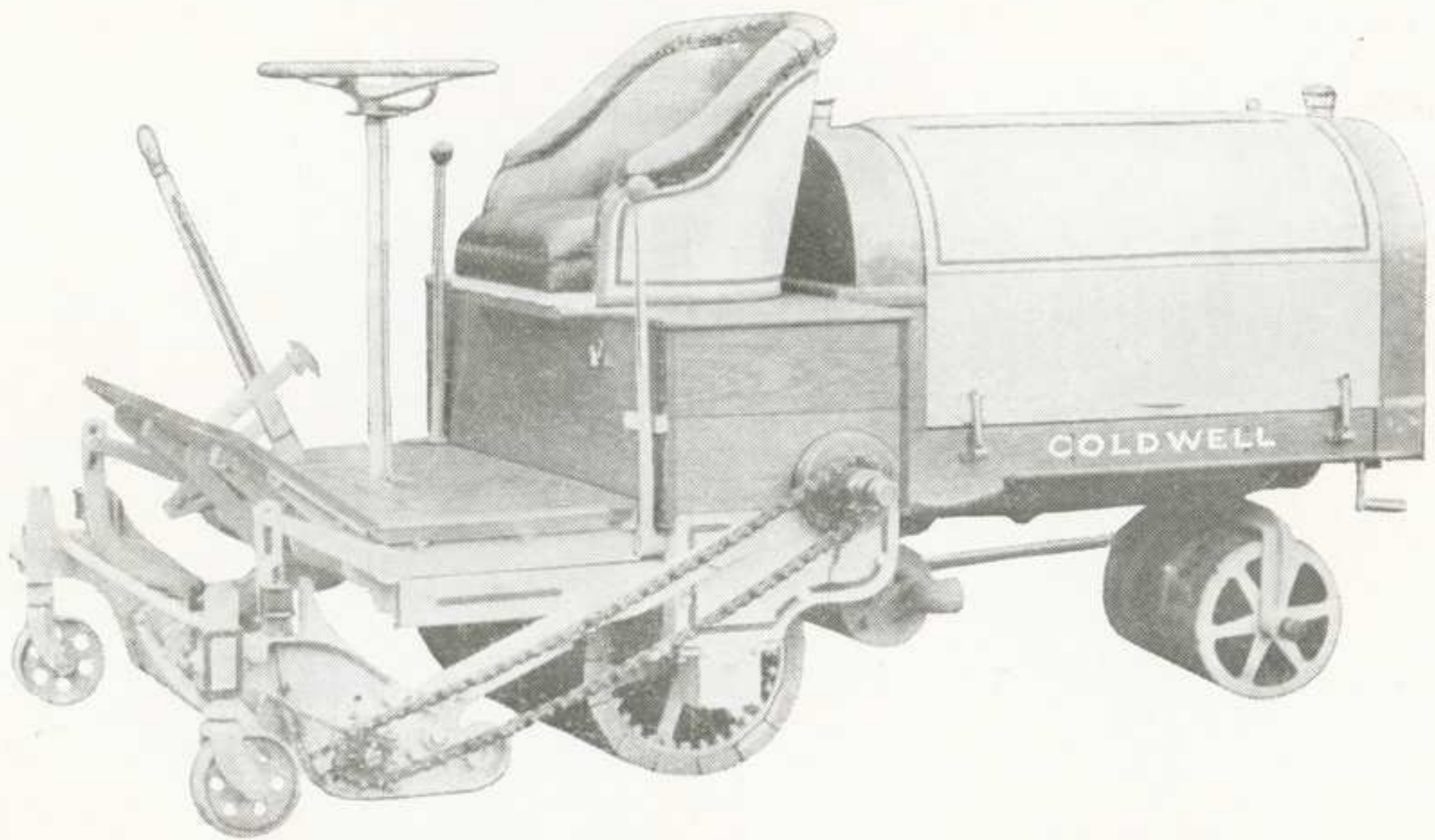
Users of Coldwell Lawn Mowers find today the same unquestionable business policies inaugurated by the founder of the Company the same superiority of product and the same strict adherence to the best in material and workmanship.

In all other respects the Coldwell Lawn Mowers of today little resemble the machine that first bore the Coldwell stamp. Improvements have been numerous — some almost revolutionary. Changes of design and construction have been made, but always for the best.

And today, as always, the name of Coldwell, whether placed on the mammoth motor lawn mower or the smallest hand machine, is everywhere recognized as standing for the best that human ingenuity and experience can produce in that particular line.



COLDWELL'S  
COMBINATION ROLLER AND  
MOTOR LAWN MOWER  
MODEL "J"



is guaranteed to do the work of three men with three horse mowers. It is much lighter than any other "ride type" motor lawn mower ever manufactured. Consequently, it can be handled much more easily and its weight is just right for rolling the lawn.

No mechanical experience is necessary to operate this machine successfully and it will save you the services of two extra men and three horses. It is indispensable to owners of large stretches of lawn which must be kept in first-class shape.

Weight of machine, 2000 lbs. *Price, \$1300.*

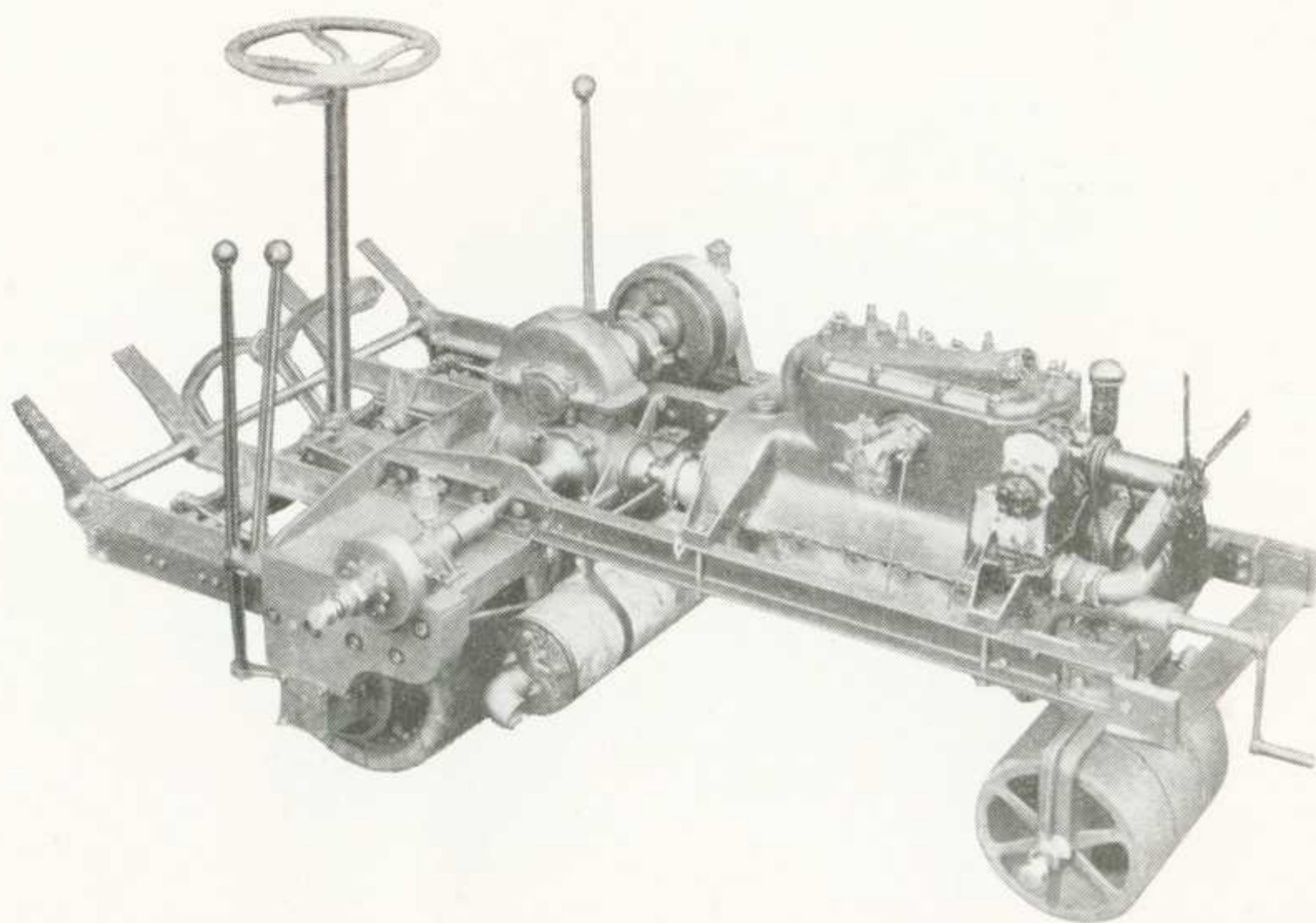
Weight on 40" drive rollers, 1100 lbs.



# MODEL "J" MOTOR LAWN MOWER

## THE MOTOR, RADIATOR, ETC.

A Continental four-cylinder 1917 model motor furnishes the power for the Coldwell Model "J" Motor Lawn Mower. The machine is also equipped with Mayo radiator, gas tanks and bonnets, Cleveland worm gear drive and Coldwell cutters. All gears are enclosed and run in dust-proof cases. It has 50 per cent. less wearing parts than any other motor lawn mower made. The gears and sprockets are all cut from the finest of steel for the purpose. Model "J" can be speeded up to six miles an hour and will easily negotiate 25% grades.



MODEL "J" CHASSIS, SHOWING ENGINE, ETC.



# COLDWELL COMBINATION ROLLER AND MOTOR LAWN MOWERS

“WALK TYPES—Models G and H”

Simplicity more than anything else, has been sought in this model. Mechanical experience is not necessary to operate it and it can be cared for by anyone.

In using this machine you simply have to guide the mower negotiating any grade that a horse mower can be used on, and running a keen 30" or 35" cutter over 6 or 8 acres per day. Model “H” weighs 900 pounds. Model “G” (same type), 35-inch cut, weighs 1000 lbs.

The operating handles are also used for raising and lowering the cutter unit over obstacles.



MODELS “G,” \$350; “H,” \$300—WALK TYPE



THE NEW 1917 MODEL  
COLDWELL "THREESOME"  
87-INCH CUT

This style of machine is designed for cutting wide swaths on grounds that are settled and dry, where rolling and fine cutting are not the first consideration.

This machine cuts an 87-inch swath, and is the most flexible machine on the market. All mowers are carried on ball-bearing axles, are all interchangeable, *and, if desired, can be used separately*, as horse or hand mowers. All gears and axles of drive wheels are enclosed in dust-proof grease cases, which need filling only once in four or five months. This means easy draft, long life to the machine, and a great saving of time.

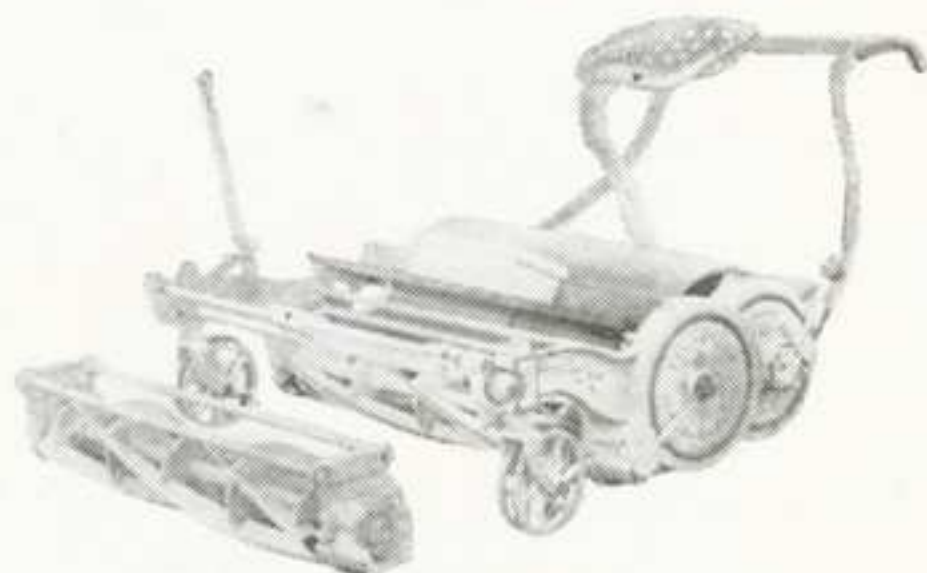


**"THREESOME" HORSE MOWER, \$300**



## COLDWELL'S "DEMOUNTABLE CUTTER" HORSE LAWN MOWER

This machine is identical with our regular Horse Mower, which is so well and favorably known, but has this *important patented feature in addition*—the cutter section, which is really the vital part of a lawn mower, has been made a unit, which may be easily taken out and another cutter unit quickly substituted.



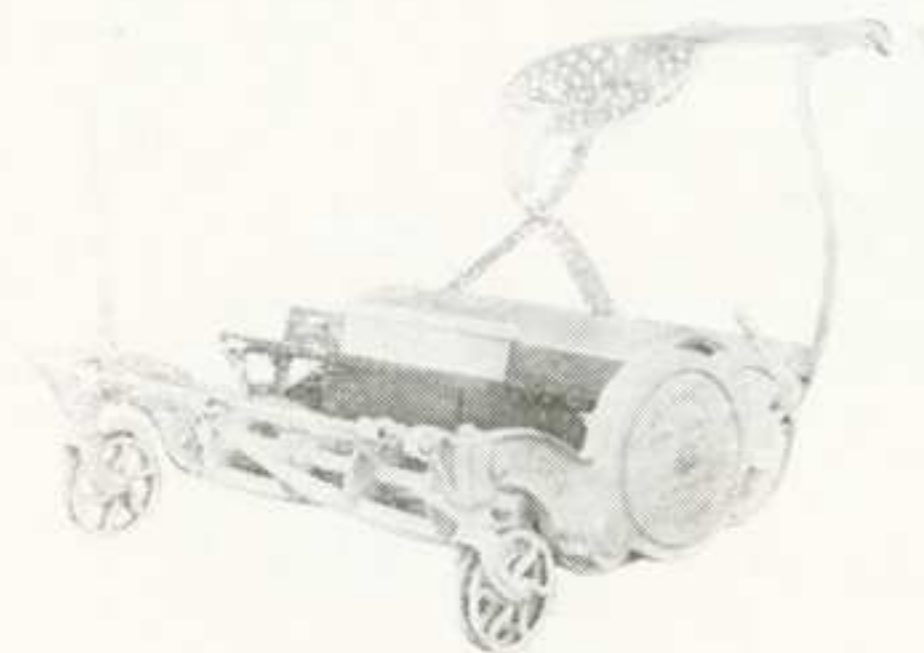
**Demountable Cutter**

Thus, the need for laying up the machine for repairs, on account of damage to the cutting mechanism, or by reason of the knives becoming dull, is reduced to a minimum.

The life of the machine is very much longer, because of these duplicated cutter unit sections, and when the machine needs sharpening, it is only necessary to send the cutting section to the factory, instead of the whole machine, as is the case with the old-style mower. This means a considerable saving in boxing and transportation charges.

## COLDWELL'S "UNIVERSAL" HORSE MOWER

On account of its material, workmanship and finish, this mower has had the reputation of being the standard for



**"Universal"  
Horse Lawn Mower**

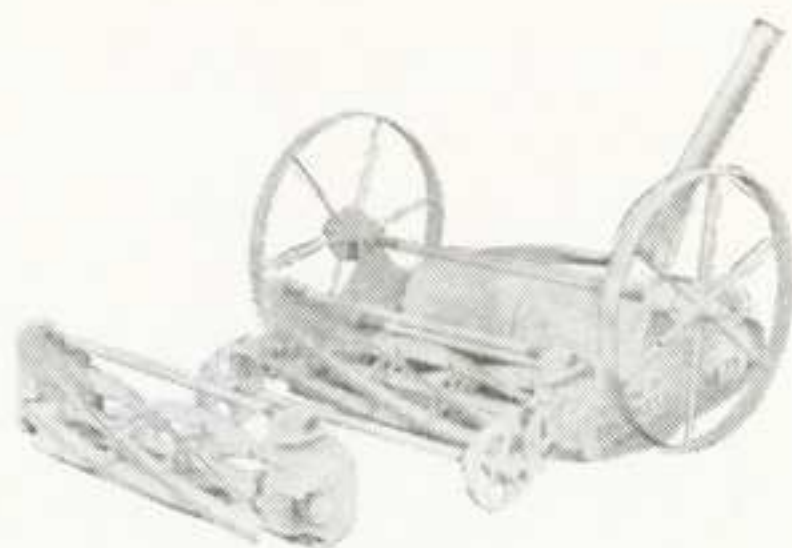
horse mowers in this country for a great many years. It is furnished complete with seat, shafts, side draft attachment, and four-blade revolving cutter, but when exceptionally fine cutting is required, we can furnish this model with six-blade cutters.

*Prices Quoted on Application*



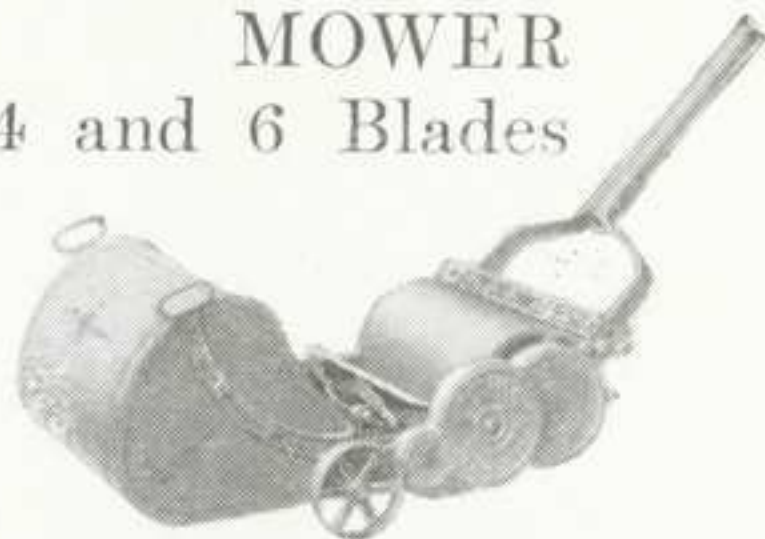


## COLDWELL PUTTING GREEN MOWER



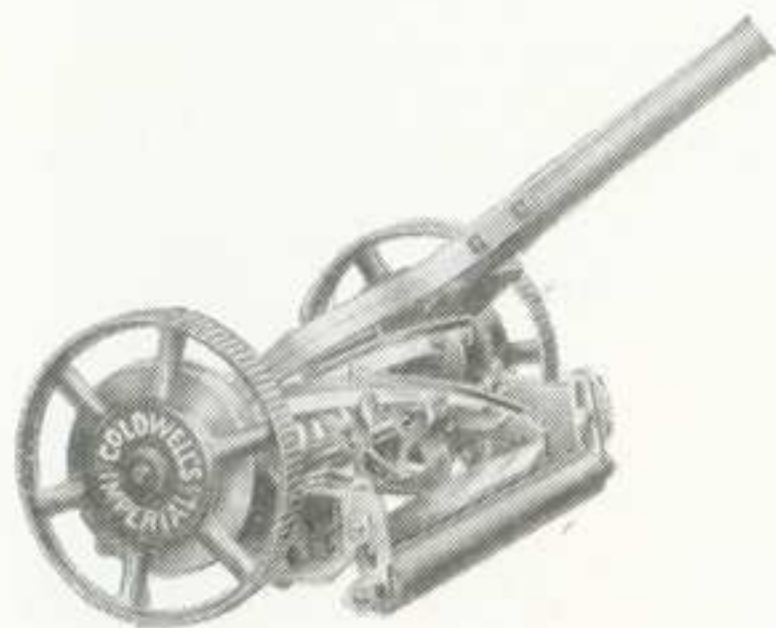
This putting green mower is finished with the exclusive Coldwell arrangement for interchangeable (dismountable) cutters. This feature assures a sharp set of six blades always at hand.

## COLDWELL "IMPROVED EXCELSIOR" ROLLER MOWER 4 and 6 Blades



This mower is especially adapted for putting greens and other fine lawns, cutting very close to turf. The large rollers keep the grass moderately rolled, smoothing out small obstructions such as sand hills, etc.

## COLDWELL IMPERIAL LAWN MOWER

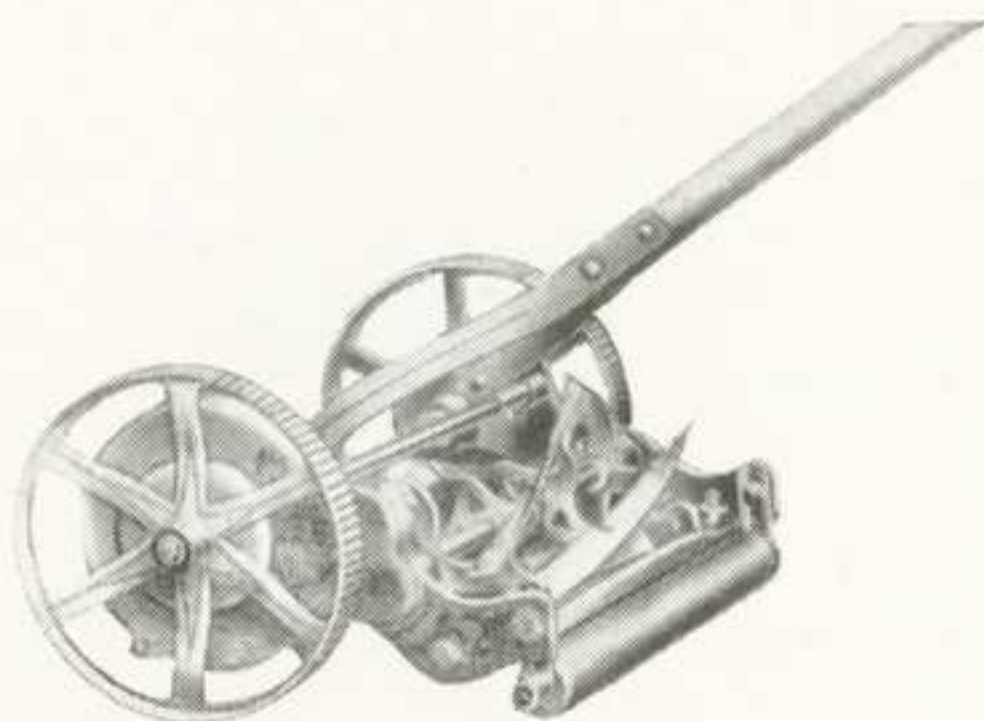


This is the highest grade lawn mower on the market for general uses. It runs practically without noise and wears indefinitely. The double-edged bottom knife can be reversed when one side is worn, thus supplying the mower with a practically new cutter, and giving it double the life of the ordinary machine. Special arrangement for terrace cutting.

*Prices Quoted on Application*

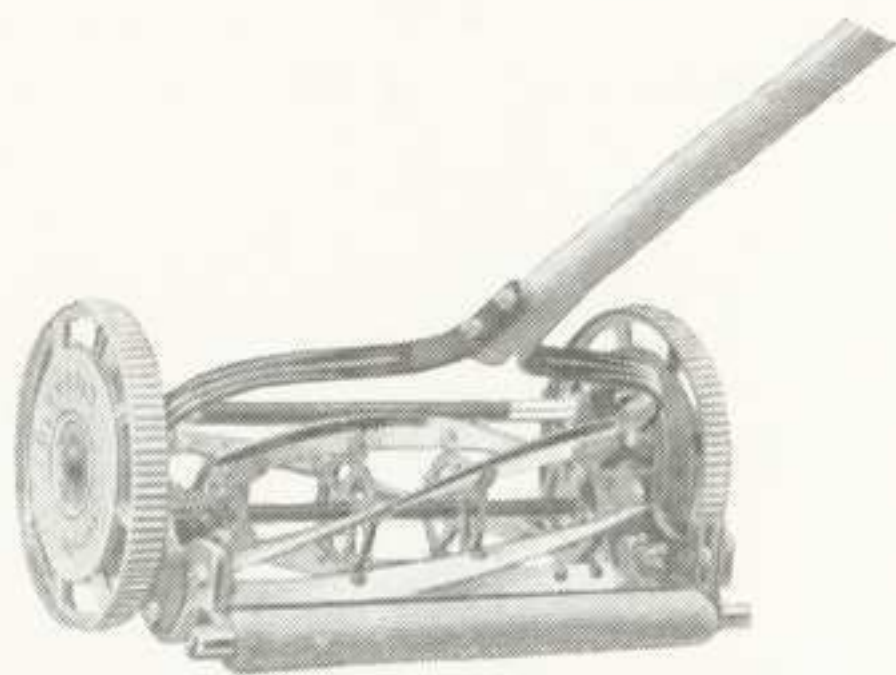


## THE COLDWELL "PARK" LAWN MOWER



The "Park" is guaranteed to do a greater variety of work than any other train geared lawn mower made. Specially adapted for cutting quick-growing, tough grass. It has the Coldwell patent device for handle adjustments, a feature that is absolutely necessary for terrace mowing.

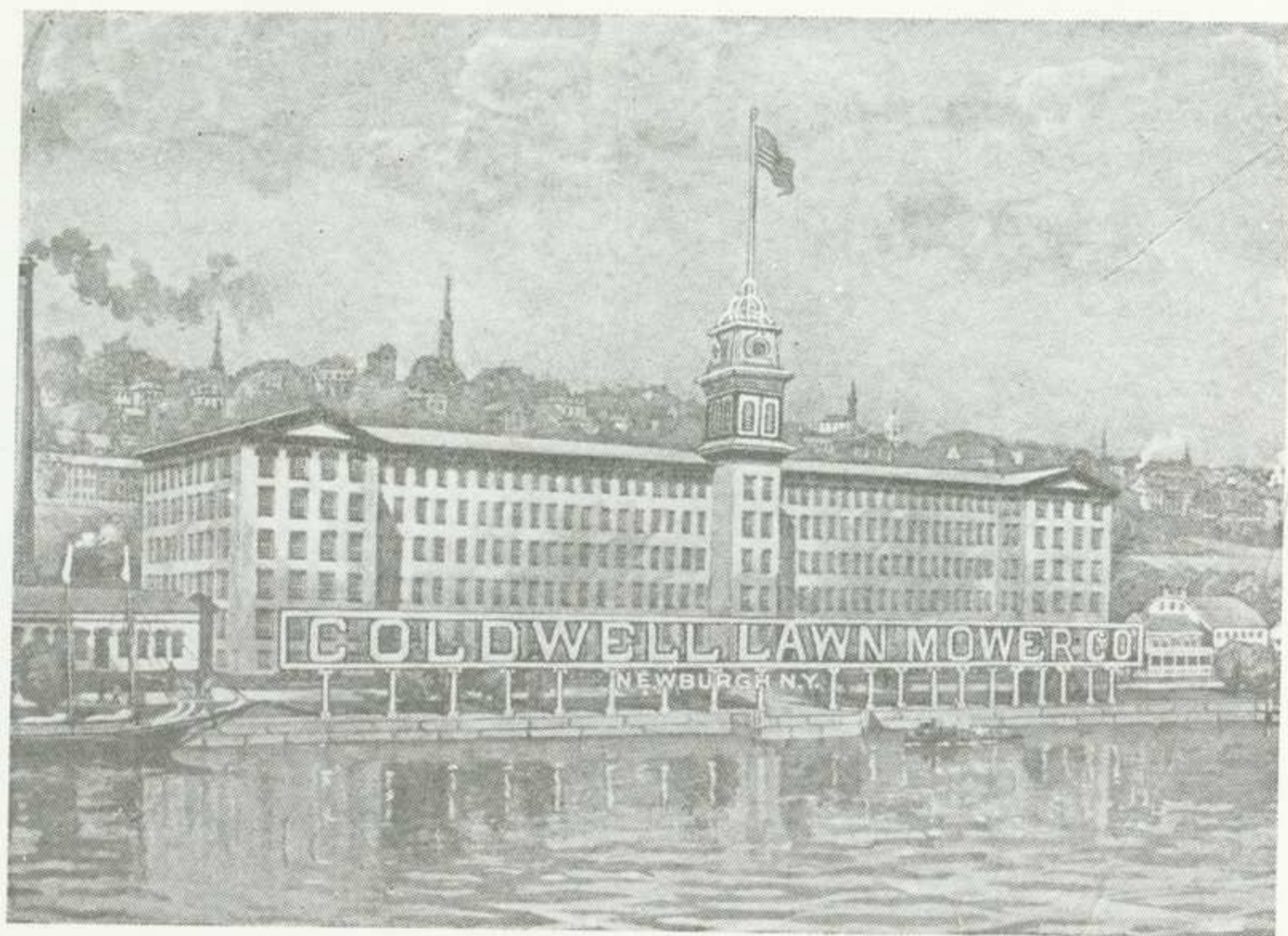
## THE COLDWELL "RAJAH" LAWN MOWER



This mower is equipped with a large diameter five-blade revolving cutter making it a specially good high-grass lawn mower. It is a strictly high-grade, ball-bearing machine and its large drive wheels ( $10\frac{1}{4}$  inches) insure lightness of draft.

*Prices Quoted on Application*





# COLDWELL LAWN MOWER CO.

Office and Factory,  
NEWBURGH, N. Y.

---

Chicago Office, 62 East Lake Street, Chicago



LONGWOOD