

LOCOMOTIVE

WITH COMPLIMENTS OF
THE LINK-BELT ENGINEERING CO.
NICETOWN 49 DEY STREET
PHILADELPHIA NEW YORK

COALING

STATIONS



AS
DESIGNED
ERECTED AND EQUIPPED
BY THE

LINK-BELT COMPANIES

PHILADELPHIA

NEW YORK

CHICAGO

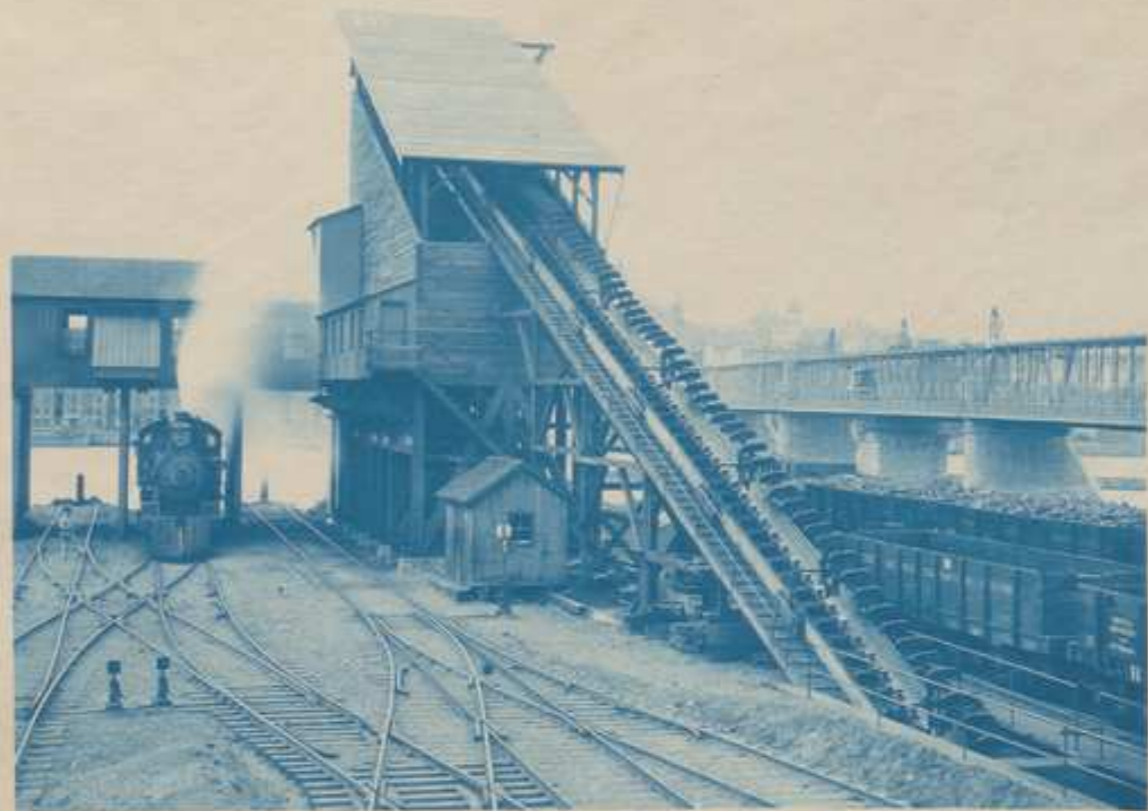
180 ton Cooling Station with Bridge Conveyor. (Capacity, 100 tons per hour). Handles run of the mine - Bituminous & Lump Anthracite. Provided with Weighing Hoppers & Weigh for Drilling Cars.



Erected 1894 at Croton, N.Y. for New York Central & Hudson River R.R. Co.

Pl. 201.1

120 ton Cooling Station with Cooling Bridge provided with Weighing Hoppers & Weighs for drift-cars. Capacity, 80 tons run of the mine Bituminous per hour.



Erected 1894 at East Albany, N.Y. for New York Central & Hudson R.R.R. Co.

92 371.2

100 ton Cooling Station with 1100 ton Storage Pocket. Capacity, 50 tons run of the mine,
Bituminous, per hour.



Erected 1894 at Lyons, N.Y. for New York Central & Hudson River R.R. Co.

82. 507. 3



Side View of Cooling Station at Lyons, N.Y. - N.Y.C. & H.R.R.R. - showing Storage -
Pocket and Cooling Bridge

22. 307. Y



~ Incline Conveyor from Track Hopper ~
~ Lyons Coaling Station - N.Y.C. and H.R.R.R. ~

02.201.5



~Distributing Conveyor~
~Lyons Coal Station - N.Y.C. & H.R.R.R.~

Pl. 301.6



~Bottom Dumping (2Ton) Coal Car used on Cooling Bridges at ~
Croton & Lyons Stations - N.Y.C. & H.R.R.R.~

92.301.7

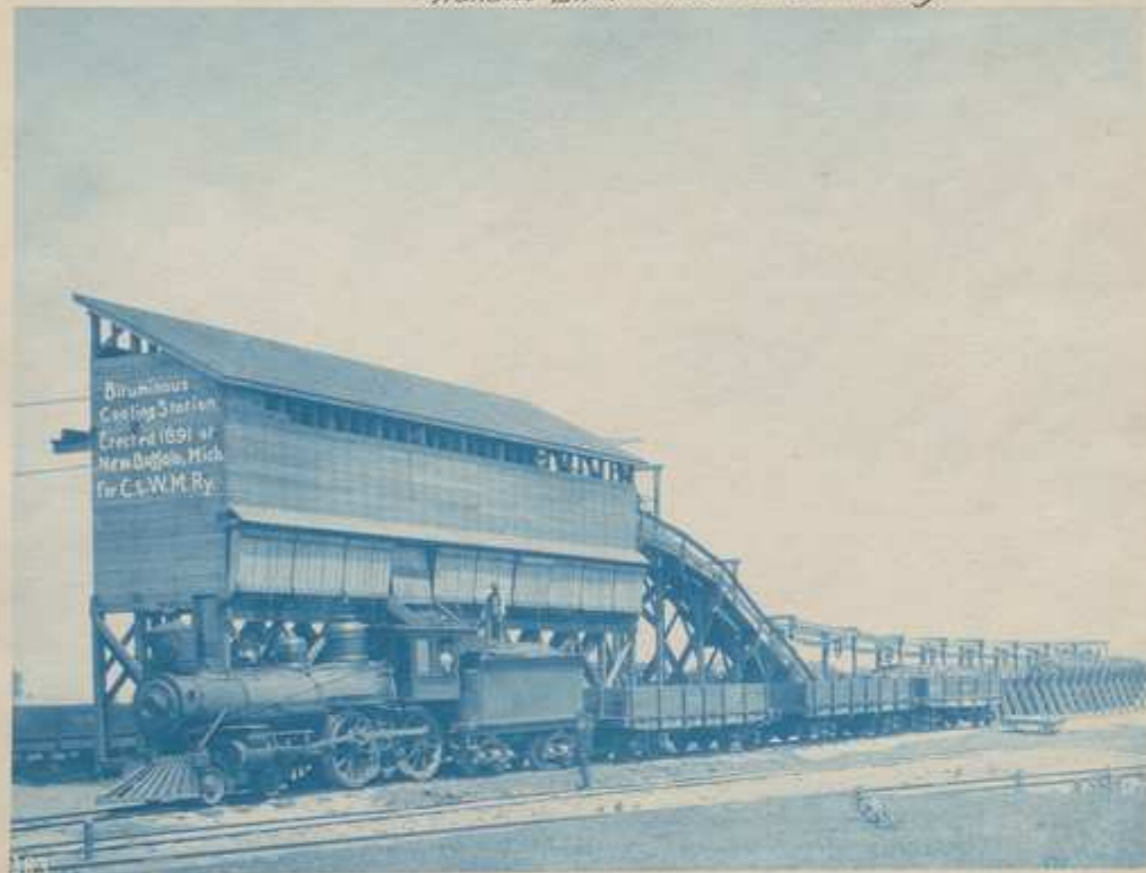
Locomotive Cooling Station with Ash Conveyor ~~~~~
~~~~~ & Steel Ash Pocket.



Erected 1891 at Lehigh Ave, Phila, for P. & R. R. Co. ~~~~~

ex. 301. B

~ ~ ~ Cooling Station at New Buffalo, Mich. ~ ~ ~  
~ ~ ~ handles Bituminous Coal exclusively. ~ ~ ~

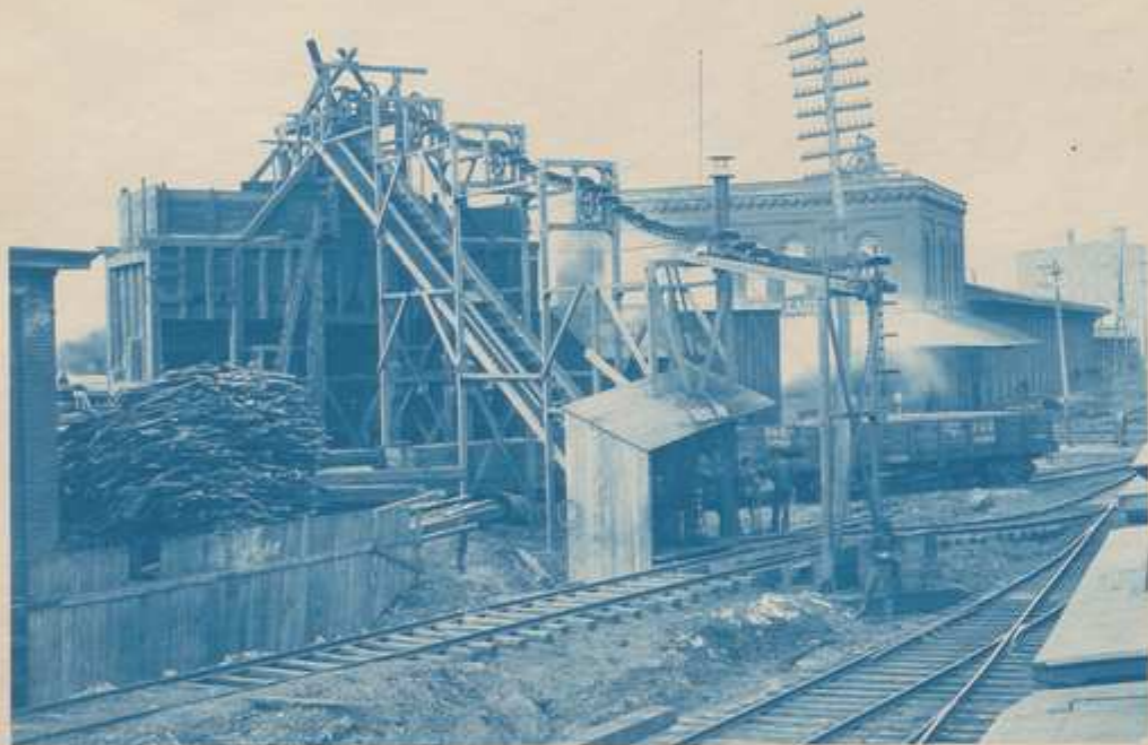


Erected in 1891 for Chicago & W. Michigan Railway Co. ~ ~ ~



82 301.9

Third of Berns Ste. Coaling Station with Conveyor at right angle to dumping track.



Erected 1893 for P & R. R. Co. at Philadelphia.

92.391.10



~ Inclined Conveyor handling Bituminous Coal - at -  
New Buffalo Coaling Station - C. & W. M. Ry. Co. ~



92.306.11

127  
200  
331

2000  
1956  
44

67  
200  
1956  
44

58  
15  
73

82.301

82.301.12

